



# Middle School

Redistricting Project





## Redistricting Process Overview

- ✓ Analyze Current Boundaries and Population Density
- ✓ Identify Areas of Growth and Known Future Growth
- ✓ Options Developed and Vetted with District Leadership
- ✓ Initial Recommendation – October BOE Meeting
- ✓ Community Forum on October 24<sup>th</sup>
- ✓ Final Recommendation – November BOE Meeting



## Current Class Size

Elementary	
Grade	Average
K	21.3
1	20.9
2	21.0
3	22.5
4	22.5
5	23.0

Middle		
Subject	Average	>=30
English	23.7	21
Science	26.2	37
Math	23.0	13
Social Studies	25.4	29
		<b>100</b>



## Why Redistrict?

2 Primary Goals:

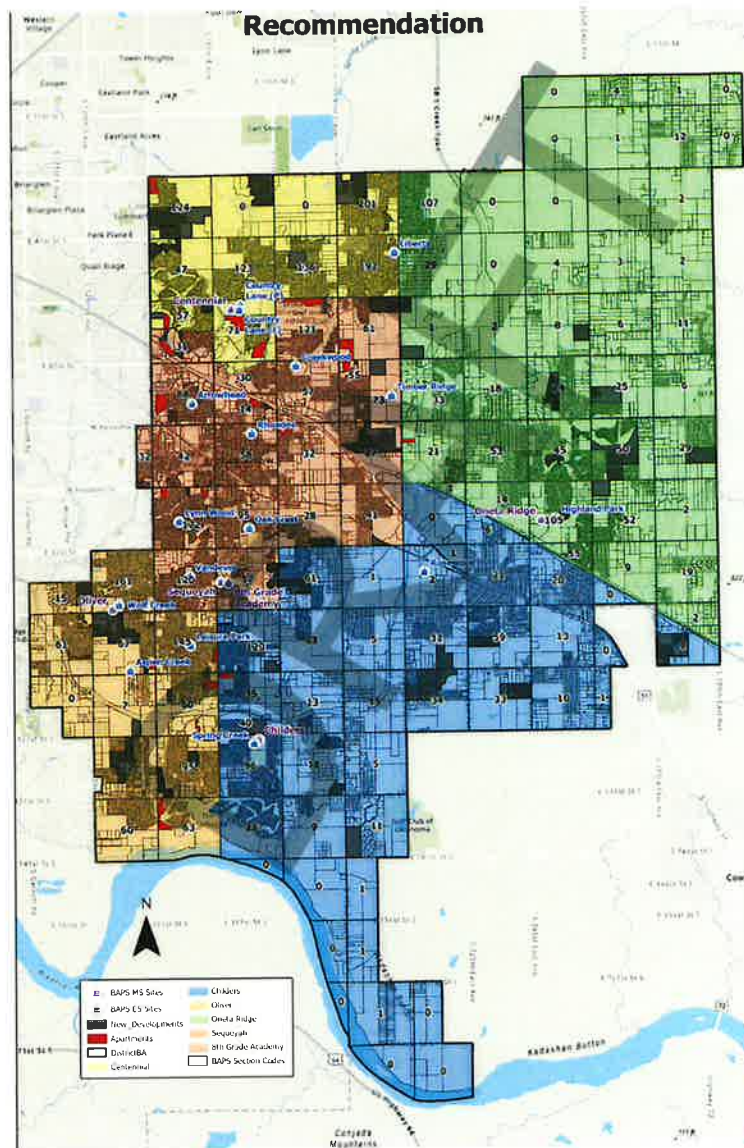
- ✓ Maintain Small Class Size
- ✓ New 8<sup>th</sup> Grade Academy Opening

Other Priorities:

- ✓ Balance Middle School Sites
- ✓ Develop Contiguous Boundaries
- ✓ Look at Development Growth and Projected Growth
- ✓ Evaluate Boundaries Annually
  - ✓ Likely Modification Every 2-3 Years



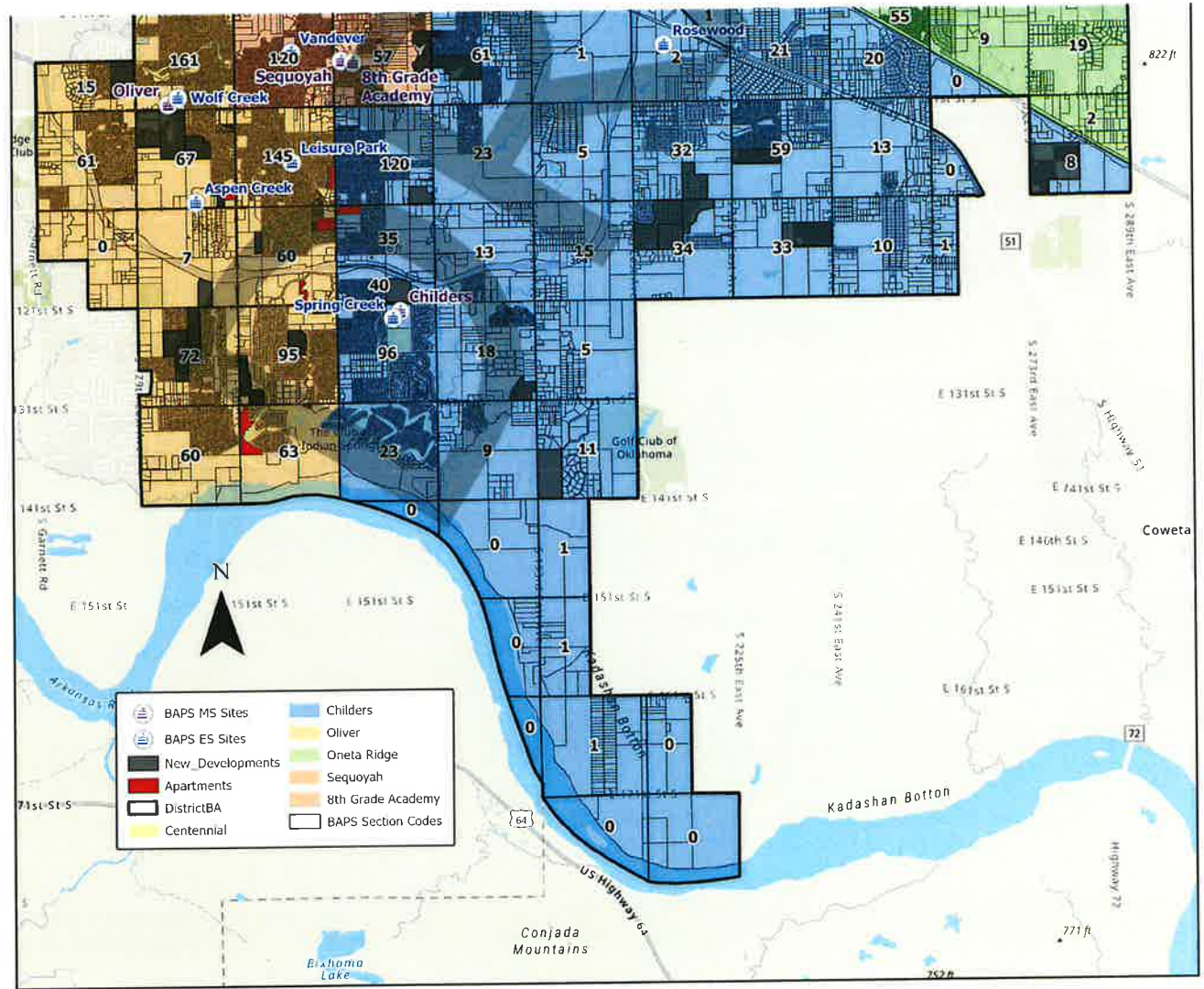
Proposed MS Boundary: Full Map







Proposed MS Boundary:  
South of 91<sup>st</sup> Street





## Data/Impact

**Total Students Affected: 895**

**Total Households Affected: 782**

**8<sup>th</sup> Grade Students: 285**

**7<sup>th</sup> Grade Students: 290**

**6<sup>th</sup> Grade Students: 320**





## Next Steps

### **Parent/Guardian Forum:**

October 24<sup>th</sup> @ Central on Main Ballroom

6pm-7:30pm

### **Board of Education Meeting:**

November 11<sup>th</sup> @ 6pm

Seeking Approval of Proposed Boundary Changes