

February 1, 2021

Broken Arrow Public Schools
Mr. Bob Tolomeo
Director of Construction
201 South Main Street
Broken Arrow, OK 74012

Re: Fee Proposal for Design Services
Broken Arrow Public Schools
Haskell Middle School - Demolition

Dear Mr. Tolomeo,

As you requested, I have prepared the following Fee Proposal for Design Services for the demolition of Haskell Middle School.

The following outline identifies an overview of the Scope of Work for which the fee applies:

SCOPE OF WORK

Preliminary Design Phase (25%)

- Field verify the existing buildings and utilities on the campus.
- Meet with the BAPS support staff to locate the best locations to re-route the existing services.
- Develop a set of preliminary plans and specs to show new routing.
- Develop new elevations for the two facades that connect to the building that will be demolished.

Construction Documents Phase (50%)

- Develop necessary documents based upon approved Preliminary Design.
- Construction Documents will include Architectural, Structural, Electrical, Mechanical, Plumbing, Low Voltage, Schedules, Details, & Specifications.
- Not part of our scope: Civil Engineering. However, the architectural site plan will show minor changes in grades to facilitate drainage.

Bidding Assistance Phase (5%)

- Answer contractor / sub-contractor questions during bidding and issue Addenda to the Construction Documents as necessary to clarify the questions.

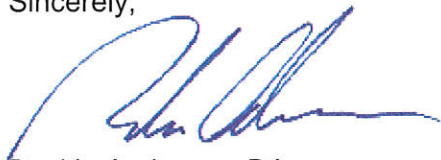
Construction Observation Phase (20%)

- Review product submittals as necessary.
- Provide site visits to verify construction is in accordance with Construction Documents. (I have assumed 1 or 2 times a week during construction.)

The fee for this work is proposed on a **fixed fee** basis in the amount of **\$23,500**.

Thank you for the opportunity to provide you with this proposal. If you have any questions, please do not hesitate to call.

Sincerely,

A handwritten signature in blue ink, appearing to read 'Rockie Anderson', written over a faint, illegible background.

Rockie Anderson, RA
GS Helms + Associates

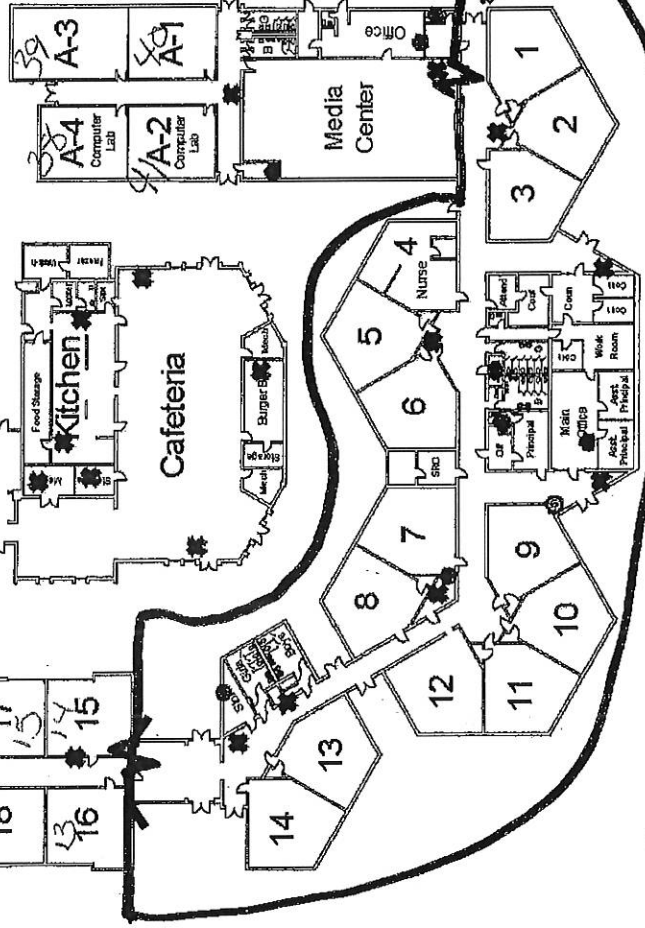
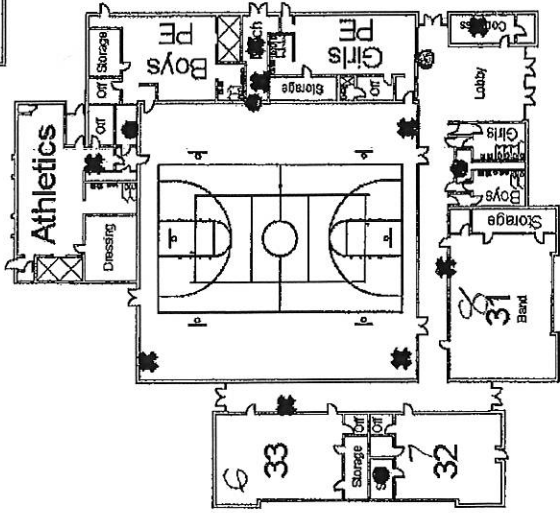
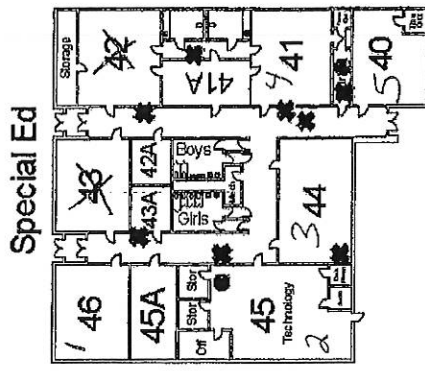
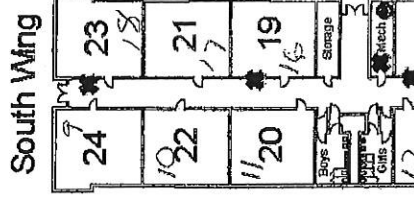
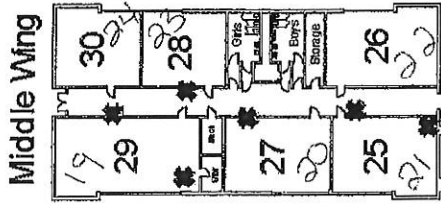
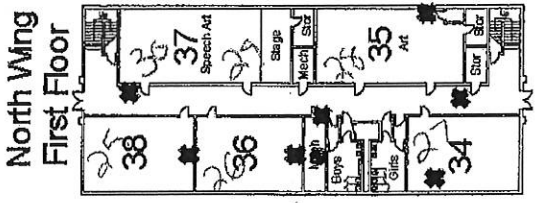
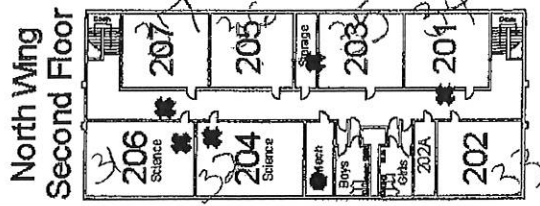


© 2010 Google

Eyealt 1709ft

© 2010 Google

36°02'50.42" N 95°46'50.01" W elev 752 ft



- Gas Meter
- ⊠ Gas Shut Off
- Water Meter
- ✱ Water Shut Off
- ✱ Fire Suppression Shut Off
- Fire Panel
- ✱ Fire Extinguishers
- ⊙ Alarm Key Pads
- Electrical Closet

Broken Arrow Academy

412 South 9th Street
Broken Arrow OK 74012

